



Special Issue for the 10th Anniversary
of Municipalization

Tatsuno City Brochure



Worth **v**isiting.
Worth **l**iving.

Tatsuno

Tatsuno, one of the most attractive and wonderful cities in Japan

Tatsuno is a city blessed with beautiful natural surroundings and a rich history.

The Ibogawa river has been a symbol of the area's fertility and the prosperity for hundreds of years.

It is brimming with historical attractions like the castle ruins, ancient shrines, and streets with beautiful old Japanese houses.

Tatsuno's strong economy is rooted in local traditional industries

like the production of somen noodles, soy sauce, and leather.

We are proud to say that our products are the top brands in their fields.

Moreover, we have a science center with the latest facilities,

known-as Harima Science Garden City.

Full of nature, beautiful surroundings, history and the latest technology,

Tatsuno invites you to partake in its abundance.

**Worth visiting.
Worth living.
Tatsuno**

Find out detailed attractions in this brochure.

CONTENTS

3 Message from the Mayor

4 Living in Tatsuno

- ① Sasa Eino Corporation ② Tatsuno's Better Future for Tomorrow Committee
③ Tatsuno Station Area Upgrading Council ④ Murotsu Fisheries Cooperative
⑤ Tatsukita-Kobo Workshop ⑥ Tatsuno High School, Comprehensive Natural Science Course

11 Glorious Sights of Tatsuno

Ibogawa river Tatsuno area Shingu area Ibogawa river area Mitsu area

16 A city with a story : The Rise of Tatsuno's industries

soy sauce somen noodles leather specialties

20 A village where people have gathered since ancient times

Ancient time ~ Medieval time Modern time
Rofu Miki Kiyoshi Miki Kanji Yano Seicho Utsumi Uichi Okami

24 Tatsuno's Seasonal Events

27 Map of Tatsuno

28 Our City for the Prosperous Future

Harima Science Garden City Our Children's Future

30 The City We Would Like to Keep Living in

The Plans to Make Our City Safer and More Comfortable
Our Mission : To stop population decline
and promote recreation in our city

Strategy ① : Settlement Policy

Strategy ② : Projects for Attracting People
and Increasing Businesses

Strategy ③ : Childcare
/ Educational Environment Improvement
/ Optimizing Human Resource

34 Tatsuno City General Information

Hi!
I'm "Akatombo-kun",
Tatsuno's mascot.
It's my job to help advertise
the city.



Transitioning from "A Decade of Harmonizing" to "A Decade of Renewal"



Mayor of Tatsuno
Hajime Kurihara

"Tatsuno City" is located in the southwest part of Hyogo prefecture. A new era began for Tatsuno on October 1st, 2005, after integrating 4 areas: Old Tatsuno city, Shingu town, Ibogawa Town and Mitsu Town. We are celebrating the 10th anniversary of our union this year and are very excited to sail out into a prosperous future. We are proud of our local farm products, seafood, somen noodles, soy sauce and leather.

Much of Tatsuno's success is due to its location. For hundreds years, it has been a hub for trade throughout western Japan. It lies at the crossing of three old major roads—Sanyo Road, Tsukushi-Omichi Road and Inaba-kaido Road. Traffic congestion is less frequent now with the Sanyo Expressway, and National Routes 2 and 250 passing through the city. The new expressway project, "Chugoku Transverse Expressway, Himeji-Tottori Route" is under way.

The mountains which account for more than half of the city's area enrich the soil and water which are fed into the Ibogawa river. Its rich waters flow to the Setonaikai Inland Sea and nourish fisheries.

In addition, there are lots of historically significant sites in our city: The Shingu-Miyauchi ruins have been designated as a national historic site; Kamo-jinja Shrine was designated as a property of national importance. The Nagatomi Residence, Hori Residence, and Tatsuno Castle all flourished during the Edo period as well as Murotsu Port which prospered as a major sea junction. Finally, the old houses which line the streets of Lord Wakisaka's castle district add great charm to the area.

We are now working on a project to further develop Harima Science Garden City into an internationally recognized place located in the northwest of our city. It features SPring-8, a large synchrotron radiation facility renowned for its performance worldwide.

We are hoping that this year will be a great first step towards dreams being fulfilled and expectations being realized. For us it's about making our city a place of joy and recreation. To do this we intend to make the best use of our local resources—the people, culture, history, industry, and natural beauty. We are asking our citizens to get more involved in solving local problems through a collected effort.

We have passed from the last decade of harmonizing to a new decade of renewal. I believe that all of our citizens are ready and willing to cooperate in bettering our city and make it truly worthy of the slogan: "Worth visiting. Worth living. Tatsuno."



Living in Tatsuno

暮

Tatsuno's strong foundation is its people. The citizens of Tatsuno willingly work together to make it a better place. In the following pages, people in various fields talk about their experiences and opinions, and we hope you will see what a nice and enjoyable place Tatsuno is to live in.



I was born in Tatsuno, and it is my belief that to preserve our farmland and to pass it on to the next generation in good condition, we need to find the best way to farm it. The key to this is understanding what works through trial and error. So the most important thing is we never give up.



We cultivate about 50ha farmland.



We sell vegetables and rice at local farm stands.



Our very own rice



At basil processing factories, we produce basil paste. We handle the entire process from production to packaging.

Living in Tatsuno ①

Sasa Eino Corporation

Representative
Masakuni Yagi

In 2002, we were established as the farmers cooperative between the Kamisasa and Shimosasa areas of Shingu town. In 2006, we became the first publicly traded company run by farmers in our prefecture. We raise high quality rice certified as a Hyogo safe food brand, wheat, soy and basil. We also process and sell basil. <http://www.sasaeinou.com/>

Living in Tatsuno ②

Tatsuno's Better
Future for Tomorrow
Committee

President
Kunihiro Mitsuda

We voluntarily established this committee in 2000, to make Tatsuno a more accommodating and vibrant community.
Our committee consists of 4,000 people; about 1,600 families of residents and landowners. Our board members are dedicated volunteers and representatives of groups such as neighborhood community associations, elderly clubs, PTA, and women's societies.
Our committee is comprised of five groups, and each group focuses on a certain activity like the conservation of old street scenery or planting trees.

**Tatsuno is full of beautiful scenery
and architecture.
When you see and feel how people live with
one another here,
you start to understand
why it's special.**



Historical townscape with old houses built in the Edo era; this area is designated as a historical scenic reserve.



A signboard explaining its history



Our committee organizes "The Autumn Festival" in which many people get together.



One of our committee's missions is to study traditional Japanese architecture throughout Tatsuno.



We utilize a traditional Japanese building as a community hall.

Living in Tatsuno ③

Tatsuno Station
Area
Upgrading Council

President
Hisao Iida

Our committee was established by some local groups in 2013.
Our goal is to make Tatsuno station area, which is on the JR Sanyo line, more vibrant. Our first step towards accomplishing this goal is to conduct a survey of Tatsuno's citizens so as to boost their morale and better understand what they would like the station area to be like. We also hold events and meetings related to achieving our goal.

**It is our aim to make Tatsuno Station
a bustling, lively place once again.
We hope that our project's
efforts will contribute
in attracting more people
to the station.**



This station was first opened in 1889.



Front area of the station



Tourist information signboard installed by our committee.



A scene at "Tatsuno Station Fureai Festival" held by our committee.



A dance performance at "Tatsuno Station Fureai Festival."

Living in Tatsuno ④

Murotsu
Fisheries Cooperative,
Women's Group

Manager

Haruyo Honda

The Women's Group of Murotsu Fisheries Cooperative was established in 1957. In 2002, we opened the farm stand "Totoichi" to promote an "eat more fish campaign." There we sell fresh seafood, make delicious readymade meals, and give cooking lessons. Our activities have been appreciated and we were awarded "The Minister of Agriculture, Forestry and Fishery Prize" by the Japanese government in 2014.
©Totoichi farm stand is open every Saturday from 10:00 until sold out!

We are fishermen's wives.
It is our mission
to pass the recipes of
our piscatorial
and local dishes to the
younger generation.



A cook book
of fish dishes
we published



We sell other food like
homemade sushi.



Our staff can fillet your fish
after you buy them here.



Fishing boats
in front of Totoichi



We sell fresh fish at
our farm stand Totoichi.

Living in Tatsuno ⑤

Tatsukita-Kobo
Workshop

Representative Director and President

Hikaru Ibaraki

"Tatsukita-Kobo Workshop" is a company run and staffed by Tatsunokita Evening High School students. It was established in April, 2013.

We do printing, designing, and have recently started creating leather goods and pottery. We are proud to sell all of these goods at our shop.

Our shop is open once a week in Shimogawara Shopping Street.

Open hours : 11:00-15:00 Every Tuesday

<https://www.facebook.com/tatukitakoubou>

Being a member of the
Tatsukita-Kobo Workshop is
a wonderful chance for me to engage
in traditional industries,
and I have a great time with other locals.
I'm hoping to stay in Tatsuno.



Product Manager
Natsuki Ota



Accounting Manager
Ai Maeda



You can find our products
being sold at local events.



Our workshop holds
leather craft lessons.

Living in Tatsuno ⑥

Tatsuno High School,
Comprehensive
Natural Science Course

Kazane Hosoda

Tatsuno High School has one "Comprehensive Natural Science Course" in each grade. It started in 2003 with the aim of developing and improving students' math and science skills.

We are privileged with opportunities to do research, fieldworks, take part in science camps abroad, and attend special lectures by university professors. Through these experiences it is our goal to improve our applied science skills and develop inquiring minds.

In 2015, we reformed our curriculum to give our students more opportunities to specialize in the sciences. Because of this, our name is now "The Faculty of Comprehensive Natural Science."

<http://www.hyogo-c.ed.jp/~tatsuno-hs>

Our school provides
us with the opportunity
to work with elementary school students.
I hope our example will encourage
Tatsuno's children to get interested
in natural science like us.



Students prepared the materials by themselves.



A special joint class with elementary school students-our high school students play the role of teachers, helping young learners understand more about natural science and craft making.



Tree shaped fiber optics

絶景

目に焼き付けたい
たつの風景

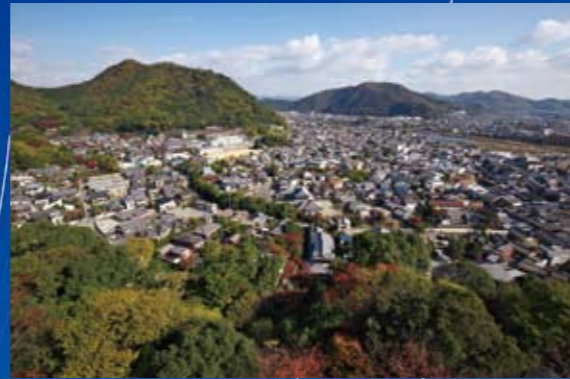
Memorable landscapes of Tatsuno "Glorious sights"

Tatsuno is a city with fertile land and an abundance of natural splendor. The marvelous landscapes afford each season an opportunity to parade their glorious colors. Sometimes gently, sometimes gallantly, Sometimes harshly, the land gives its bounty to the people.

Fishing for sweetfish in a clear stream



Tatsuno Castle
studded with stars



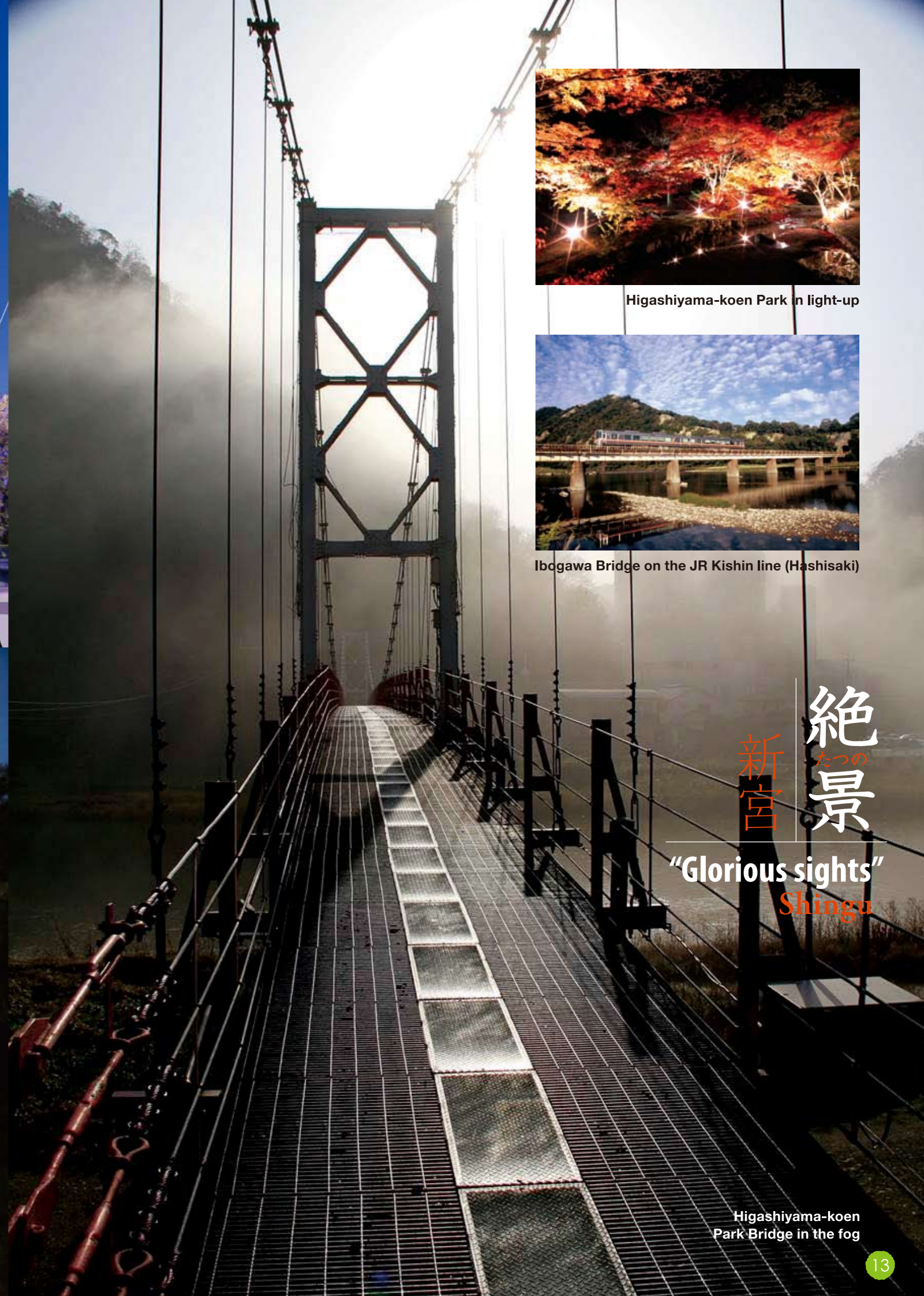
A view from Mt. Matobayama



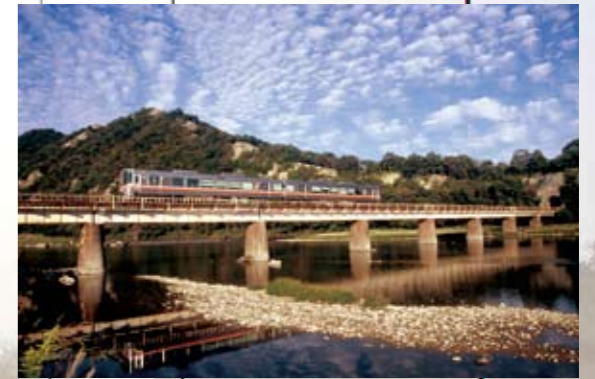
龍野 絶景
たつの

"Glorious sights"
Tatsuno

Shuntei, Tea ceremony room
with beautifully colored maples



Higashiyama-koen Park in light-up



Ibogawa Bridge on the JR Kishin line (Hashisaki)

新宮 絶景
たつの

"Glorious sights"
Shingu

Higashiyama-koen
Park Bridge in the fog

JR Sanyo line and Ibogawa river



絶景
たつの
揖保川

“Glorious sights”
Ibogawa River



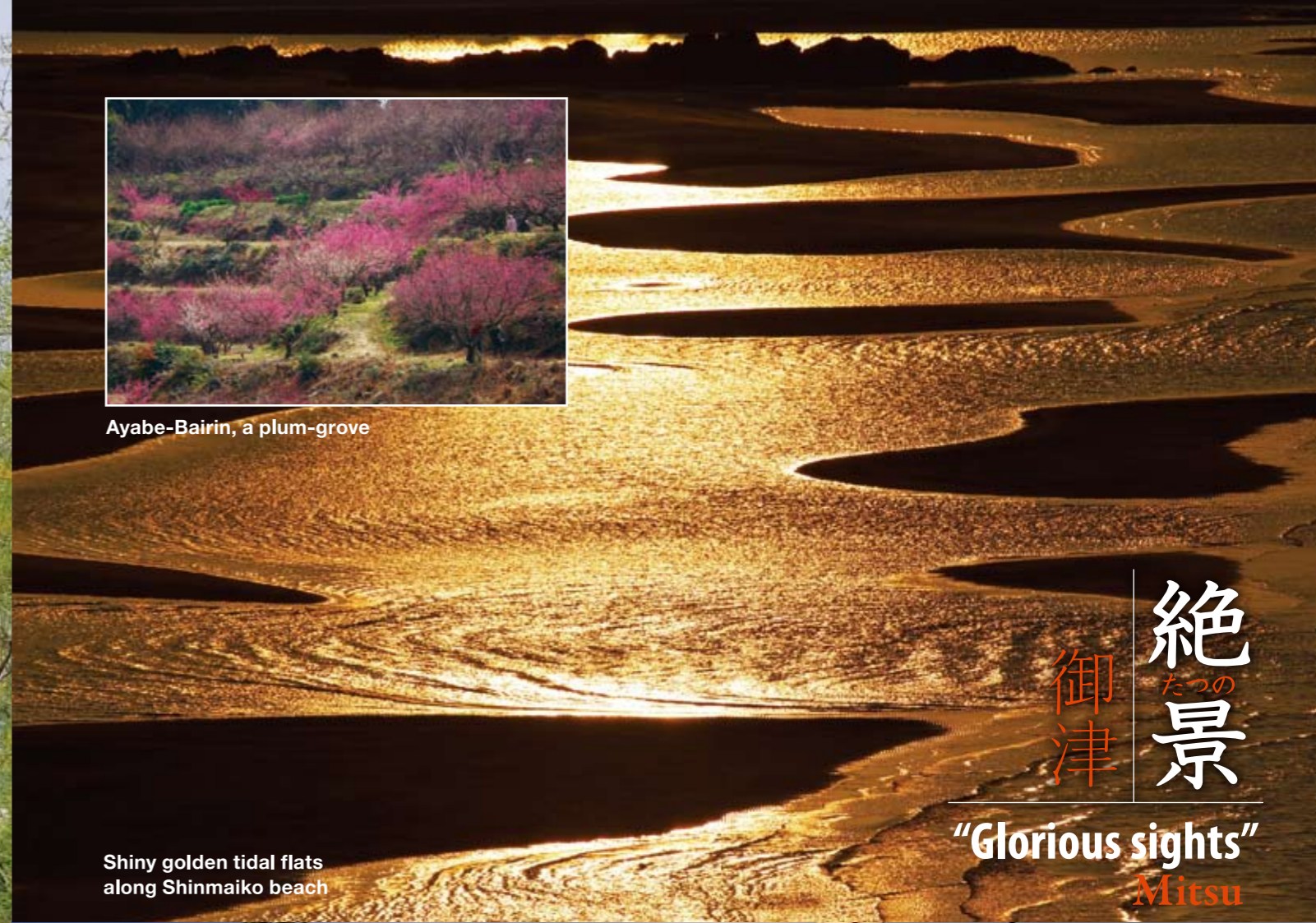
A view from Mt. Kibita-Fuji



Shojo-Sakura-Zutumi, a dike lined
with cherry blossoms



Ayabe-Bairin, a plum-grove



Shiny golden tidal flats
along Shinmaiko beach

絶景
たつの
御津

“Glorious sights”
Mitsu



Murotsu Fishing port at the beginning
of the year in January

A city with a story : The Rise of Tatsuno's Industries

Tatsuno is a city blessed by the life-giving Ibogawa river.
Many of our local traditional industries have developed because of it.
These include; Kyoto-style soy sauce, somen noodles, leather and more.

醤油

soy sauce

Use our delicious
Kyoto-style soy sauce without
making it go dark brown

Tatsuno city is famous for being the place of production of Kyoto's special soy sauce "Usukuchi" which is essential for many of its dishes.
The Ibogawa river has played a crucial role in Usukuchi soy sauce production, because it contains little iron. This soft water is not suitable for producing one of Japan's major products, rice wine, but essential for producing the special soy sauce "Usukuchi".
What is more, there have been the areas of producing high quality soybeans, wheat and salt near here, and they could utilize that river for transportation.
"Usukuchi" was invented in the late 17th century and developed a reputation in Kyoto and Osaka as one of Japan's best soy sauces. Its popularity in the Kyoto and Osaka areas continues until this day.



Soy sauce companies in Tatsuno compete with each other to produce the best tasting soy sauce.
"Usukuchi" soy sauce is an indispensable element of Kyoto dishes which adds flavor while retaining the aesthetic integrity of each dish.
Each company has their own blend and enthusiastically competes with others to produce the best tasting soy sauce.



"Usukuchi" Tatsuno Soy Sauce Museum

You can see the original tools that were used for producing soy sauce until the early 20th century here. There are also well-preserved business documents and relevant materials on display. The museum building has been designated as an important cultural property by Tatsuno City.

Address : 54-1 Ote, Tatsunocho, Tatsuno, Hyogo
Phone : +81.791.63.4573
Open hours : 9a.m. — 5p.m.
Closed : Mondays • End of Year and New Year's Days
Admission : 10yen



A successful endeavor in a competitive traditional industry ①

By-products of Soy Sauce

Tatsuno's soy sauce companies have expanded their businesses by ensuring that nothing is wasted. By-products of the soy sauce manufacturing process are used to make other foods like moromi-dipping sauce and ponzu-seasoning. Their unique products attract many people and they have plenty of patrons. They have increased their number of production facilities and they are expanding their business still. Enthusiasm for creating and producing better tasting original products is a staple of Tatsuno's competitive soy sauce industry.



tsukudani : by-products of soy sauce



**Our most popular products:
soy sauce, somen noodles and leather—
popular throughout Japan!**

素麺

somen noodles

Our somen noodles
boast a legacy of more than
600 years

Ancient documents reveal that somen noodles were already eaten in the Harima area 600 years ago. In the Edo era, the local lords encouraged farmers to produce somen noodles as a side-business in the winter time. People started to mass-produce somen noodles.
Our somen noodles are made from high quality flour and salt, in a traditional way with ripening which occurs in several stages.
Our handmade somen noodles "Ibono-ito" are considered a top brand and are popular all over Japan. To ensure high quality, the somen noodles manufacturer association manages the purchasing of ingredients and selling of products. They are also responsible for ensuring that food is produced at the highest standard.



An old picture book showing how handmade somen noodles are produced

This book has been designated as a tangible folk-cultural property by the city government

This book shows the 13 steps of producing handmade somen noodles in the late 19th century.

Anybody can do it!



Demonstration / Experience / Observing / Tasting

Ibono-ito Museum Somen-no-sato

You can see the history of Tatsuno's somen noodles and the production process here.

Address : 56 Okumura, Kamiokacho, Tatsuno
Phone : +81.791.65.9000
Open hours : 9 a.m. - 5 p.m.
Closed : Mondays (If a national holiday falls on Monday, we will be open, but closed the following day.) • End of Year and New Year's Days
Admission : 300 yen / adult
200 yen / junior and senior high school students
100 yen / children



A successful endeavor in a competitive traditional industry ②

Instant Noodles

While retaining the traditional methods of producing "Banshu somen noodles," one company in Tatsuno has continuously aspired to produce new types of noodles. For example, the instant noodles which appeared post war have been a tremendous success. These noodles were first sold in 1963, and they are still popular and available. Today instant noodle production is one of their most important businesses.



instant noodles



Check it out!
Our products are top quality.
People enthusiastically
support our businesses.

皮革 No.1 production leather of tanned bull leather in Japan

W With its strategic location along the Ibogawa river, Tatsuno's abundant water, salt, and mild climate made it an ideal city for manufacturing leather. Since the Kamakura Era (early 13th century), leather businesses have thrived here. Today, we are currently Japan's No.1 bull leather producer. Bags, clothes, shoes, and gloves are just some of the goods our leather is used for.



Leather craft class

Tatsuno city government provides free leather craft trial lessons (lesson materials are not included) to help people learn how to make leather goods. Some private shops also give people opportunities to experience leather working for themselves. You're always welcome to join us!



Tatsuno Leather Festival

This is one of the biggest leather expos in Japan. Here, you will see an array of prized works from the "Hyogo leather contest." After, you can go enjoy a leather fashion show held mainly by local high school students. People also like taking leather craft lessons and shopping at leather product stalls.



A successful endeavor in a competitive traditional industry ③

School Bags

A leather school bag production company in Tatsuno dominates its market in Japan. Long ago, they produced and sold some leather crafts made of Tatsuno leather. When World War II ended in 1945, they built a school bag factory in Murotsu the following year. Their business has continued to develop and expand since then because of their highly specialized skills. They currently produce some of the most impressive school bags in Japan and have attracted international attention.



school bags



The clear, rich waters of the Ibogawa river have helped preserve traditional techniques and provide a strong foundation upon which high-quality products may be produced.

Besides the traditional industries, we have lots of regional produce grown outdoors thanks to the mild climate, Ibogawa river, Setonaikai-Inland Sea and Banshu-flatland. All of them are high quality. They are the final products of our proud farmers who have used their knowledge and skills to the best of their ability.



Ibogawa tomatoes

A farming specialist, who has raised tomatoes over a half of a century, created this tomato. This tomato is highly disease-resistant because of its rich soil and unique watering method. It is smaller than an ordinary tomato, but rich in taste and well-known throughout Hyogo by the brand name "Ibogawa Tomatoes."



Nariyama-shinden vegetables

Tokuzaburo Nariyama drained the beach away to make "Mitsu-Nariyama-shinden field." The field faces the Setonaikai-Inland Sea and enjoys mild weather. It is now used to grow Japanese radishes, carrots, melons, and other fruits and vegetables.

All
this produce is
of the highest
quality



Oysters

Oysters farmed in Murotsu are larger than usual, shrink less when heated. They are delicious fresh or cooked and have good reputation with their wonderful taste. They do not only farm and fish, but also produce a variety of delicious condiments like oyster sauce and other foods to go with their scrumptious catches.



Soy sauce Manju (Steamed bean-jam buns)

Manju, or steamed bean-jam buns are common throughout Japan, but in Tatsuno, you can enjoy special ones with soy sauce twist. Our local specialty "Usukuchi" soy sauce is mixed with dough into which bean-jam is wrapped up and then steamed. The subtle soy sauce flavoring perfectly complements the bean-jam working for a delectable snack.

Some farmers have already expanded their business to the 6th level of industry.



"The 6th industry" is a new style of business in which local farmers and fisheries manage the entire operation from producing and processing to logistics and sales. A large growing number of people and the Tatsuno City Government support this style of business, because of the food safety it promotes as well as the collaboration between local farmers and food manufacturers.

Farmers and companies cooperate to optimize "local production for local consumption."



Basil



Forbidden rice



Mulberry

Shingu-Miyauchi Ruins

[National historical site]

This is a hamlet ruin dated from the Jomon Era(around13,000B.C.~3,000B.C.). It was last populated during the Heian periods(around the 10th century). Here ancient dwellings known as pit houses have been excavated along with tombs surrounded by ditches, that were used mainly to bury the village nobles. An abundance of clay vessels and stone tools have also been discovered. This site is now under refurbishment in order that it may be a historical site park—a special feature of the Nishi-Harima area.



A village where people have gathered since ancient times

The limpid waters of Tatsuno's Ibogawa river run through the city to the Setonaikai-Inland Sea. Ruins of the Jomon Era and ancient documents like Harimanokuni-Fudoki (1,300 years old) reveal that this tributary conveniently served as a key junction of transportation and trade for thousands of years. These regional records illustrate the significant cultural and geographical importance of Tatsuno in the past.



Buried Cultural Artifacts Center

Standing in the vicinity of the Shingu Miyauchi Ruins, the center gives us insight into the cultural and historical heritage of Tatsuno and its neighboring areas. The ages of the artifacts displayed in the center range from primeval to medieval times.

古

Primeval times ~ Medieval ages

In Tatsuno, there are lots of historical sites to see, such as settle ruins from the Yayoi Era (approximately 3rd century B.C. to 250 A.D.) and old castles.



Hashisaki Byobuiwa Sheer Cliff

[Deemed as a Natural Monument by Japanese Government]

These dikes formed of andesitic rock look like the folding screen so common in Japanese houses. They are splendid natural structures which have attracted people's attention since ancient times.



Fuseno-umaya

This kind of facility named "Umayu" was widely built in the 8th century during the Nara Era to provide travelers with an accommodation and a place to stable their horses. This was the first ruin to be officially recognized as an "Umayu."



Kamo-jinja Shrine

[A nationally important cultural property]

It was built in the Heian Era (794~1185). You can see a beautiful scenery of Setonaikai-Inland Sea from this shrine.



Temman-jinja Shrine, Main Sanctuary

[A nationally important cultural property]

First built in the 14th century, the main sanctuary of Temman-jinja Shrine was rebuilt in 1544 and is an example of the architectural style of that period.

Modern times

A typical castle town was erected around Tatsuno castle in the Edo Era(1603~1868). There still remain lots of important cultural properties such as the residences of important samurai, and wealthy farmers, and old soy sauce storehouses.



The Hori Residence

[A nationally important cultural property]

The Hori Residence was a wealthy farmer's home built in the Edo Era. The main building was constructed in 1767.



The Nagatomi Residence

[A nationally important cultural property]

This too was a wealthy farmer's residence built in the final days of the Edo Era. It is open to the public.



Shuen-Tei

[Designated as a historical site by Tatsuno City]

Shuen-Tei is a tea-ceremony house in Tatsuno-koen Park. It was built in the late Edo Era.



The Lion Dance of Nagihachiman-jinja Shrine

[An important cultural property of Hyogo Prefecture]

It is uncertain when this shrine was first built, but the name is mentioned in some ancient documents dating more than 1,000 years old. The lion dance is always performed by a couple of people and there are about fifteen variations. The acrobatic performance is wonderful and worth seeing.

Yuyake koyakeno akatombo Owarete mitanowa itsunohika

Red dragonflies flying in the sky, robed with the sunset,
Riding home on Mom's back, a sweet childhood memory.

“Akatombo” is a famous nursery rhyme written by Rofu Miki who was born in Tatsuno.

The poem recalls childhood memories of his mother and life in Tatsuno. It was published in 1921.

In 1927, the composer, Kosaku Yamada, composed music for this poem and it quickly became popular across Japan.

Today, it is well known by all Japanese people.



Rofu Miki (1889~1964)

The birthplace of Rofu Miki

Rofu Miki lived in this house until he was 5. This house is now opened to the public.



Akatombo-song stone monument

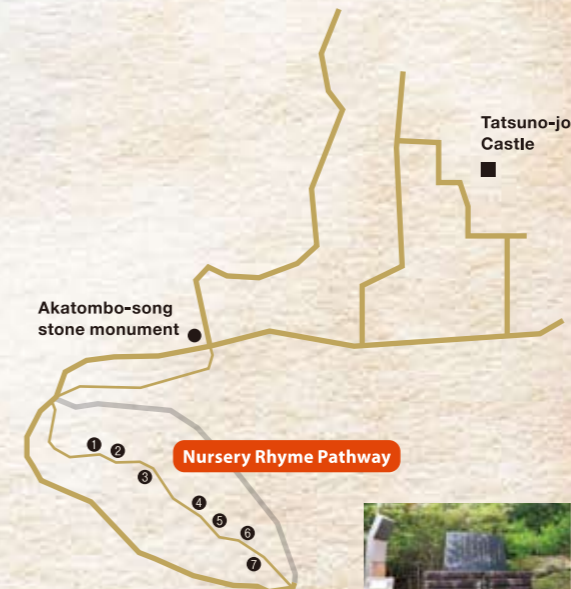
New Nursery Rhyme Competition for “Rofu Miki Prize”

Tatsuno city has organized a nursery rhyme poesy competition since 1985. The prize nursery rhymes have new music written for them are sung to the tune of a classical nursery rhyme.



Declaration as a “Town of nursery rhyme”

Tatsuno city made a declaration as a “Town of nursery rhyme,” and has promoted “cultivation with nursery rhymes.” We also made a “Nursery Rhyme Pathway” in the Tatsuno-koen Park.



5



6



7



1



2



3



4

Nursery Rhyme Pathway

Along Nursery Rhyme Pathway stand some stone monuments with inscriptions of famous Japanese nursery rhymes, including the Akatombo-song.

Tatsuno people in culture

Many people who represent Japanese culture were born in Tatsuno.



Kiyoshi Miki
(1897~1945)

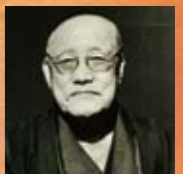
Philosopher

Kiyoshi Miki wrote famous books such as “A Theory of Life in a Notebook” and “A Philosophy in a Notebook.” His influence was felt by people across Japan.

Kanji Yano
(1880~1961)

Poet

He is famous for writing the lyrics for “The Song of the Old Education System’s High School Dormitory.” Later, he was a successful businessman.



Seicho Utsumi
(1884~1968)

Poet

In the Meiji Era, he wrote wonderful poems describing life in the country, and he is now known for them.

Uichi Okami
(1865~1941)

Natural historian

He taught himself and was credited for discovering new species of plants and crams.



Tatsuno's Seasonal Events



Tatsuno enjoys lots of seasonal festivals and events.

Whether you're savoring the cherry blossoms or watching the Samurai Warrior Parade march through the old castle district, there's so much to enjoy. The Autumn Festival is also popular with no less than 120,000 attending it every year. (Tatsuno's population is about 80,000, so the city's population swells by about 50% while the festival lasts.) Not only residents, but many tourists as well come to enjoy the Autumn Festival every year.



Kosatsuki-matsuri Festival



Mitsu Ume Festival



Noryo Fureai-matsuri & Firework Festival



Umaba Cosmos Flower Festival



Hassaku-no-Hina-matsuri, Doll Festival on August 1st.



Nagihachiman-jinja, the Lion Dance



Autumn Festival in Tatsuno



Muronotsu Festival



Doyo-matsuri, Japan Nursery Rhyme Festival



Sakura Festival・Samurai Warrior Parade



Ibogawa River Rafting Festival

4 At the beginning of April

- a Sakura Festival・Samurai Warrior Parade**
To celebrate the cherry blossoms in full bloom, we hold several different events. At the Tatsuno Sakura Festival, 300 people clad in samurai warrior costumes march in a parade through the old castle district. At the Ibogawa Sakura Festival, people enjoy a flower dance and give other traditional art performances.
●Held in Tatsuno-koen Park / Tatsuno-jinja Shrine / Noda-suiguchi Park

At the beginning of April

- b Kosatsuki-matsuri Festival (The Pole Song : Sao-no-uta)**
[An important intangible cultural property of Hyogo Prefecture]
Intangible as it is a song, yet so important that it has been deemed cultural property by Hyogo Prefecture. The woman served at Komo-jinja Shrine started a tradition with her singing and dancing. People sing "The Pole Song" or "Sao-no-uta" at this festival. This song and its name have been recorded in an ancient document from the Heian Era (approximately 1000 A.D.)
●Held at Kamo-jinja Shrine

7 July 20th

- c Mitsu Umi-matsuri Festival**
This is a big summer event at which people enjoy a traditional performance, "Hiage" and setting off fireworks along 500 meters of beach. This is called "Niagara Falls Fireworks." There are also many festival stands serving delicious Japanese food.
●Held at Shinmaiko Beach

In Late July

- d Nursery Rhyme Festival**
At this festival, local music groups give performances of mainly nursery rhymes to an accompaniment of folk music. The participants range from nursery school students to adults.
●Held in Akatombo Culture Hall

In Late July

- e Ibogawa River Rafting Festival**
Participants enjoy traveling down 2 kilometers of the Ibogawa river on their own hand made rafts.
●Held in Ibogawa Kirameki Sports Park ~ Saseragi Park

In Late July

- f Noryo Fureai Matsuri & Firework Festival**
Jizo-bon, a children's religious festival, is celebrated with fireworks. Stalls selling delicious Japanese food line the street this day.
●Held around Harima-Shingu Station, JR Kishin Line



1st Saturday of August

In Late August

- g Tatsuno Noryo Firework Festival**
Enjoy a display of roughly 2,000 fireworks with us!
●Held in Chidorigahama Ground
- h Hassaku-no-Hina-matsuri, Doll Festival on August 1st of the Lunar Calendar**
(This date will vary from year to year as it is calculated according to a lunar calendar.)
This festival commemorates a bride-to-be who died a violent death during the Provincial Wars. We hope that celebrating her life at this festival will put her bitter soul at rest. We hold this festival six months later than the common date of doll festivals in other areas.
●Held in Murotsu area

In the middle of October

- i Tatsuno Furusato Festa**
All the city residents are encouraged to participate in this festival.
●Held around the City Hall and Nakagawara-koen Park areas

In the middle of October

- j Umaba Cosmos Flower Festival**
Every year people raise 5 million cosmos flowers on 50,000㎡ of idle farmland. At this festival you can also see the traditional Lion Dance and other staged events.
●Held in Umaba, Ibogawa Town

20th October

- k Nagihachiman-jinja, the Lion Dance**
This Lion Dance is performed at the annual festival and it is dedicated to the Nagihachiman-jinja Shrine in Kamioka Town. The acrobatic dance "Tsugi-jishi" or known in English as "The Heir of the Lion" is the most impressive of the twelve dances.
●Held in Nagihachiman-jinja Shrine in Kamioka Town

In Late October

- l Commerce and Industry Festival**
Here are street stalls and a variety of staged events.
●Held around Aqua Hall

In Late October

- m Rofu Miki Prize "New Nursery Rhyme Competition"**
We solicit people for their poems all over Japan. The best poems have original music written for them and are released as newly composed nursery rhymes to the public.
●Held at Akatombo Culture Hall

At the beginning of November

- n Muronotsu Festival**
We promote Tatsuno with our fresh local seafood and historical townscape.
●Held in Murotsu area

In Late November

- o Leather Festival**
To promote the appeal of our local leather industry, high school students organize a leather fashion show and private companies exhibit and sell their finest leather products.
●Held at Akatombo Culture Hall and others

In Late November

- p Autumn Festival in Tatsuno**
Here you can experience a vast array of events and exhibitions—actually more than 270!—in about 140 locations throughout Tatsuno. These locations include temples, residents' houses, soy sauce storehouses in old Tatsuno castle district.
●Held in the old castle district



New Year's Firefighters' Event



Kite Festival



Mitsu Ume Festival

Tatsuno's Seasonal Events



Ume-to-Shionoka Marathon



Tatsuno Hina-Nagashi

The city is alive.
Everyone is celebrating.



1
In the middle of January

In the middle of January

In the middle of January

2
At the beginning of February

11th February

3
In the beginning of March

21st March (Spring Equinox Day)

New Year's Firefighters' Event

Firefighters put on a show for spectators and enjoy the spotlight. Here you can also drink the delicious "Amazake" -fermented rice milk-for free.
●Held in Chidorigahama Ground

Kite Festival

People love flying kites—hand made kites of all different shapes and sizes from everywhere in Japan. The kites dance through the sky in celebration of the New Year.
●Held in Chidorigahama Ground

Ume-to-Shionoka Marathon

Runners start the race at Ayabeyama Plum Garden and run a circuit along Harima Seaside Road and Shinmaiko Beach back to the Plum Garden. We have the Murotsu Oyster Festival on the same day.
●Held around Mitsu Sports Ground

Castle District Exhibition

Tatsunokita High School students cooperate with town residents to organize this event, utilizing the traditional townscape of the castle district as the exhibition venue.
●Held in Tatsuno castle district

Mitsu Ume Festival

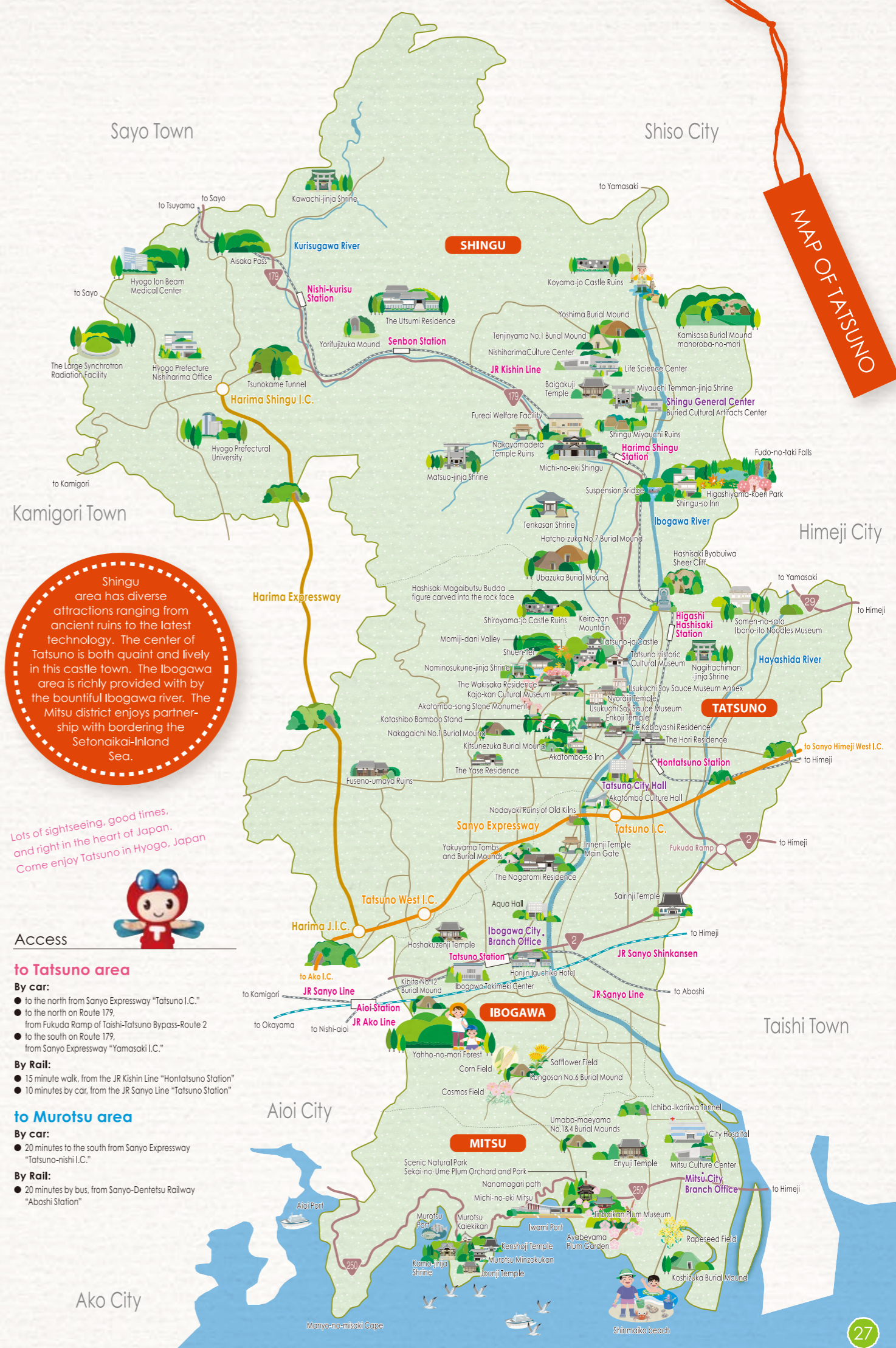
Japanese people associate the blossoming of plum trees with the arrival of spring. Both children and adults enjoy the staged performances, stalls and walking tour through the plum gardens at this event.
●Held in Sekaino-Ume-Koen Plum Park

Shingu Rakuichi-Rakuza Market

Retailers sell their local specialties and come from every corner of Hyogo Prefecture for this event. There are also some entertaining staged performances.
●Held in Shingu General Branch Office of the Tatsuno City government

Tatsuno Hina-Nagashi

In Japan, dolls are considered a kind of talisman that can bear a curse. When a person has owned a doll for a number of years and is ready to get rid of it, they give it a proper farewell ceremony. Sending paper dolls down Ibogawa river is an environmentally friendly way to say goodbye.
●Held in Gion-koen Park (Gion Bridge)



SPring-8・SACLA

SPring-8 is a large-scaled synchrotron radiation facility, currently outperforming every other similar facility in the world. SACLA is an x-ray free electron laser featuring the minimum-size, the shortest wavelength, the top radiance in the world. These two facilities support each other and work better in tandem. Thus, many researchers come from home and abroad to study in them. They are the very best places for conducting research and developing the latest technology.

©RIKEN

Our City for the Prosperous Future

Harima Science Garden City Harima Science Garden City is in the northwest part of Tatsuno city. Several of its facilities are equipped with the latest technology.

Some examples are the large synchrotron facility "SPring-8," the X-ray free electron laser known as "SACLA" and the Hyogo Ion Beam Medical Center. Tatsuno City is eager to promote cutting edge industries like nanotechnology as well as living in harmony with nature.



The facility of SACLA

©RIKEN



Tulip Garden



"Trial Week"

Junior high school students experience a five-day workweek at various companies throughout Tatsuno city.



Tatsuno Kids' Firefighter Club

Children participate in events held by the fire department. These include over night camps and fire department facility tours to learn about fire and disaster prevention.



Young Learner Tour Guides

Elementary school students from Tatsuno, Oyake, and Murotsu play the role of tour guides by leading visitors on guided tours of the Tatsuno area, Hori Residence, and Murotsu area.



Program : Raising a Generation to Lead in the Sciences

Teachers from University of Hyogo, neighboring high schools and high school students visit elementary schools to teach and help students understand the scientific world better. Their aim is to help young students develop inquisitive minds and a love for science by focusing on experiments and fieldwork.

Kids' Science Programs

Tatsuno City organizes special classes for elementary school students so as to give them opportunities to conduct science experiments and research scientific topics.

Our Children's Future

Tatsuno City gives children lots of opportunities to get work experience and learn about history, disaster-prevention, nature, and science.



transplant rice in the field / harvesting

Elementary school students experience transplanting rice seedlings into the field in the traditional way—by hand! They then harvest that rice in the fall.

The City We Would Like to Keep Living in

To protect the well-being of Tatsuno's residents, we must take steps to guarantee that counter measures are in place in case of a natural disaster or other terrible accident. As well as being necessary, these countermeasures ensure that our citizens have peace of mind. We have disaster prevention programs, provoke the local economy, provide childcare, and much more.



The Plans to Make Our City Safer and More Comfortable

The city government promotes disaster prevention in order to protect our citizens and their property.

We are refurbishing public buildings like the elementary and junior high schools as well as the community halls to improve their earthquake resistance capabilities. We have also proceeded to reinforce roads, municipal residences, infrastructures and other facilities.

The Nishi-Harima Fire Union is developing an emergency command center and revising local disaster prevention plans to comply with latest simulation results of potentially huge Nankai Trough earthquakes and Yamasaki Fault quakes.



Our Mission :
To stop population decline and promote recreation in our city

Strategy 1 : Settlement Policy

Tatsuno City Settlement policies:

1. Support service to help people moving into Tatsuno find a residence
2. Support service to help local young people find a residence (This is to encourage young people to settle in Tatsuno and raise their children in a good environment.)
3. Support service to put vacated houses in our town to good use
4. Vacated house registry
5. We are using our well-organized network of local public transportation to make our train and bus schedules more efficient and accessible.

Why don't you get a house in Tatsuno ?

500,000yen
*Settlement Incentive for People Moving into Tatsuno

This is only for people not already living in Tatsuno and who have bought a house to live in permanently. A 500,000yen grant will be given to them over the course of their first three years in Tatsuno. (1st year—300,000yen, 2nd year—100,000yen, 3rd year—100,000yen)

300,000yen
*Settlement Incentive for Young People Living in Tatsuno

This is only for married couples who are currently living in Tatsuno and desire to buy a house to live in permanently. A grant of 300,000yen will be fully given to them in the first year.

Strategy 2 : Projects for Attracting People and Increasing Businesses

We would like people from all over Japan to know about our wonderful city and come visit us. We know that tourists make a city more lively and so we have created the application, "Toko-Tatsu Walk," to guide tourist around the city and help them find what they are looking for. We also have our city's mascot "Akatombo-kun" –or "Red Dragonfly Boy" in English—to help make our city more appealing and draw more tourists. With Toko-Tatsu Walk and Akatombo-kun, we hope to shove the beautiful townscapes of Tatsuno and Murotsu as well as the natural beauty of the tidal flats, Shinmaiko Beach.

Enjoy pretending to be a **samurai** warrior in traditional garb!

As part of Tatsuno's tourism promotion projects, you are welcome to try on a full set of the traditional Japanese armor and stroll in the castle district. This full set of armor consists of a helmet, face protector, lap protectors and shin protectors, and weighs 15 kg. You will feel as if you were a samurai warrior in 16th century Japan.

Come and see!



Renovation and Refurbishment of Roads

We are systematically renovating and refurbishing city roads, not only major roads but also country roads.



JR Kishin Line

JR Kishin Line is essential to the Harima area transportation system. People use it for commuting to offices, school and going to the shops. To keep this railway from shutting down and make it more convenient, we have begun the "Challenge to get three million passengers campaign." We offer financial support to groups of passengers and new commuters.



image

Tourism Projects

We created the application "Toko-Tatsu Walk" for smart-phones to help tourists learn more about sightseeing spots and local industries. Through it, we expect more people will experience the beautiful old townscapes of the Tatsuno and Murotsu areas, the tidal flats in Shinmaiko Beach, and other nice spots.



The City We Would Like to Keep Living in

Strategy 3 : Childcare・Educational Environment Improvement ・Optimizing Human Resources

For Tatsuno's children who will spend their lives here, we would like to give them the best possible environment to grow up in. To realize this, we are willing to support childcare, improve the educational environment, and cultivate Tatsuno's human resources. An example of this is we are currently providing parents with professional counseling services to solve their problems in raising children and expanding childcare services.



Free Medical Care for Children

All Tatsuno children are eligible for free medical care including doctor's visits and hospital stays until they finish junior high school. This helps young couples manage their living expenses.

Authorized Childcare Facilities

To give mothers more opportunities for working, we encourage nurseries and kindergartens to conform the city's latest standards. Authorized childcare facilities can provide parents with more comprehensive services.

Parents and Children's Facilities

There are four centers in Tatsuno, which provide children with a place to play and take special lessons with their parents who may be struggling to raise them. These centers provide Tatsuno's residents with professional child rearing counselors as well as give parents opportunities to meet one another.

New Childcare Support Policy

Based on "The three laws for children and childcare", Tatsuno city has made "Tatsuno City Support Service Project for Children and Childcare." To implement this project effectively, we have organized the "Children and Childcare Conference" and asked our citizens for their opinions and ideas.

Tatsuno City General Information

City Flower

Tatsuno city is in the southwest part of Hyogo prefecture and has a rather rectangular shape running from north to south. The northern part of the city is mainly covered with the mountains, and the southern part faces the Setonaikai-Inland Sea. The Ibogawa river runs through the city from north to south. The city enjoys splendid natural beauty. City land: 15.7km from east to west / 29.8km from north to south 210.89km² in size



“Akatombo-kun” Red Dragonfly Boy

The character Akatombo-kun, was conceived on November 3rd, 2009. He plays a role in lots of the city's events and ceremonies.



Official Data

● Name	Akatombo-kun	● Address	Alongside Tatsuno's Ibogawa river (around the limpid stream)
● Gender	Male	● Personality	Shy
● Age	5 (forever)	● Special skill	Public relations activity for Tatsuno
● Birthday	November 3rd	● Favorite food	Somen noodles, soy sauce manju
		● Favorite song	The nursery rhyme “Akatombo” (A red dragonfly)

Sister Cities



City Emblem

The initial “T” serves as our city's emblem. It embodies the city's essence with three colors. Red symbolizes the sun's rays shining down upon us, green represents our rich farmland, and blue is the misty wind coming off the Ibogawa river. The elements represent our blessings: A place rich in nature and soaring towards a bright future.



City Flower

Sakura (The cherry blossom)
The cherry blossom is also the national flower of Japan.



City Tree

Ume (Plum trees)
The plum tree is one of the three most auspicious plants in Japan.



Aki City, Kochi Prefecture

Partners since April 1988. We share the common goal of invigorating our cities through the nursery rhyme projects. We work to boost one another's morale and serve to encourage and inspire the other.



Nagahama City, Shiga Prefecture

Partners since March 2001
Tatsuno's domain lord, the Wakisaka family, came from Wakisaka Village in Nagahama City during the Edo Era. We have a historical bond and now hope to deepen ties by continuing to make history together.



Mitaka City, Tokyo

Partners since March 2001
Tatsuno's famous poet, Rofu Miki, spent the later part of his life in Mitaka City. Rofu serves as a mutual connection and because of him we have a special relationship.



Special Issue for the 10th Anniversary
of Municipalization

Tatsuno City Brochure

Publication Date / June, 2016
Publisher / Tatsuno City

T 879-4192
1006-1 Tominaga, Tatsunocho, Tatsuno, Hyogo
TEL. +81.791.84.3131 FAX. +81.791.83.2594
URL <http://www.city.tatsuno.lg.jp>